

Lesson 2

ANSWER KEYS

Figure 3



Figure 4

Many Landforms

Figure 4 ✎ There are so many different landforms, but they are all connected. Choose two landforms. Draw a line from one landform to another and tell how they are connected to each other.

Sample: The glacier melts and makes the river that flows into the ocean and makes the delta.



Figures 5 & 6

Topographic Map of Mt. Grinnell

Figure 5 The contour lines on the map can be used to determine a feature's elevation. Use the contour lines to determine the elevation of Mt. Grinnell.

between 2688 and 2736 m

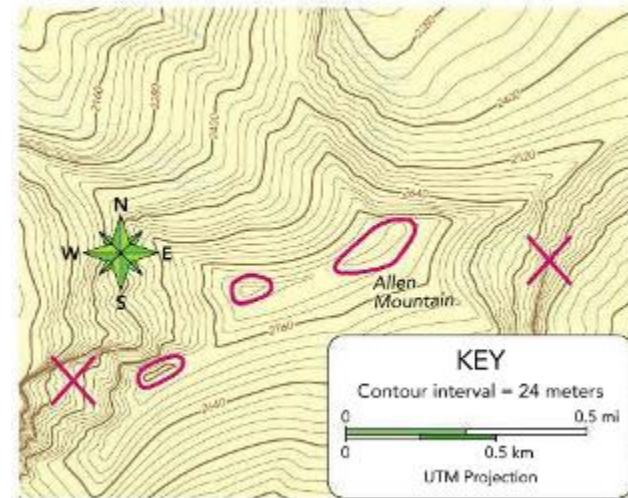


Figure 7



Students' maps should follow the shape and direction of the streets in the photo.

Figures 8 & 9

GIS Map

Figure 9 ✎ A GIS map has many data layers that can be used to analyze how different systems interact. Shade in the floodplain on the combined map. Where should a city planner avoid building houses? Why?

Elm St., because it's in the flood zone

Satellite Image of North America


Figure 8 ✎ Scientists and mapmakers identify special features on an image by their color and shape. For example, forests appear green, water may be blue or black, and snow is white. Draw an X to show where your state is.

Interpret Photos Write about the features you see in the satellite image.


Sample: I live in California and I can see brown areas that are deserts.



Reading Checks

 **READING CHECK** **Determine Central Ideas** Explain the three ways that land can be described.

elevation, relief, and landforms: Elevation is the height above sea level. Relief is the difference between the highest and lowest points. Landforms are features such as coastlines and mountains.

 **READING CHECK** **Integrate With Visuals** Refer to the art in **Figure 2** that shows the collision of India with Asia. How did changes in the geosphere cause the Himalayas to form?

When the Asian and Indian landmasses came together, some land was pushed upward.

Reading Checks

READING CHECK **Compare and Contrast** How are dunes and deltas similar and different?

They are both made of sand. Dunes are formed by wind.

Deltas are formed by water.

READING CHECK **Write Explanatory Texts** Explain ways in which GPS and GIS are more useful than a topographic map.

Topographic maps show only elevation. GPS finds exact locations. GIS combines information from multiple sources to analyze geographic data.